

# SBS A2 | AISI304

## SELF-DRILLING TIMBER-TO-METAL SCREW

### BIMETAL SCREW

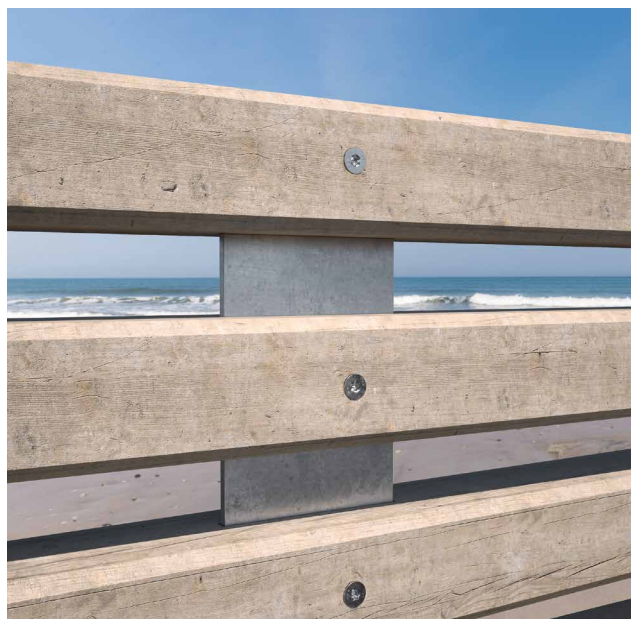
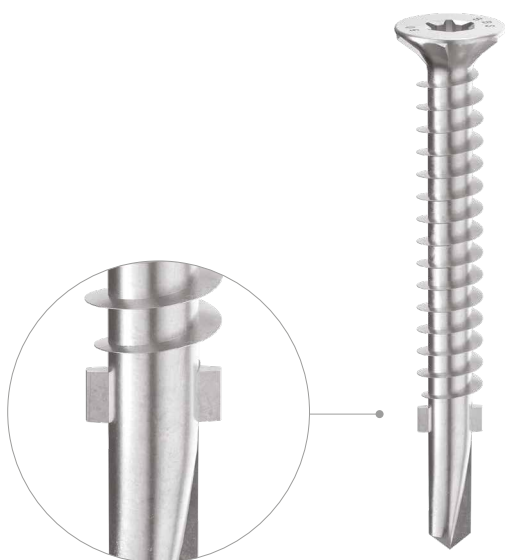
The head and body are made of A2 | AISI304 stainless steel, thus providing high resistance to corrosion. The tip is made of carbon steel for excellent drilling performance.

### TIMBER-TO-METAL TIP

Special self-perforating tip with bleeder geometry for excellent drilling capacity both in aluminium and steel. The fins protect the screw thread during timber pull-through.

### STAINLESS STEEL

The A2 | AISI304 stainless steel head and body make it ideal for outdoor applications. Very sharp under-head ribs for a perfect surface finish on the wooden element.



#### DIAMETER [mm]

3,5 ☒ 4,8 ☐ 6 ☐ 8

#### LENGTH [mm]

25 ☐ 45 ☒ 120 ☐ 240

#### SERVICE CLASS

☒ SC1 ☒ SC2 ☒ SC3

#### ATMOSPHERIC CORROSIVITY

☒ C1 ☒ C2 ☒ C3 ☒ C4

#### WOOD CORROSIVITY

☐ T1 ☐ T2 ☐ T3 ☐ T4

#### MATERIAL

**A2**  
AISI 304 A2 | AISI304 austenitic stainless steel (CRC II)



### FIELDS OF USE

Direct fastening, without pre-drilling hole, of timber elements to steel substructures:

- in S235 steel with a maximum thickness of 6,0 mm
- in aluminium with a maximum thickness of 8,0 mm

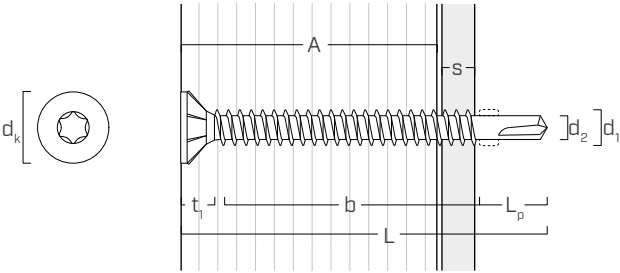
CODES AND DIMENSIONS

d <sub>1</sub> [mm]	CODE	L [mm]	b [mm]	A [mm]	s <sub>S</sub> [mm]	s <sub>A</sub> [mm]	pcs
4,8 TX 25	SBSA24845	45	31	30	1 ÷ 3	2 ÷ 3	200
5,5 TX 25	SBSA25555	55	39	37	2 ÷ 5	3 ÷ 5	200

d <sub>1</sub> [mm]	CODE	L [mm]	b [mm]	A [mm]	s <sub>S</sub> [mm]	s <sub>A</sub> [mm]	pcs
6,3 TX 30	SBSA26370	70	53	49	3 ÷ 6	4 ÷ 8	100
	SBSA263120	120	103	99	3 ÷ 6	4 ÷ 8	100

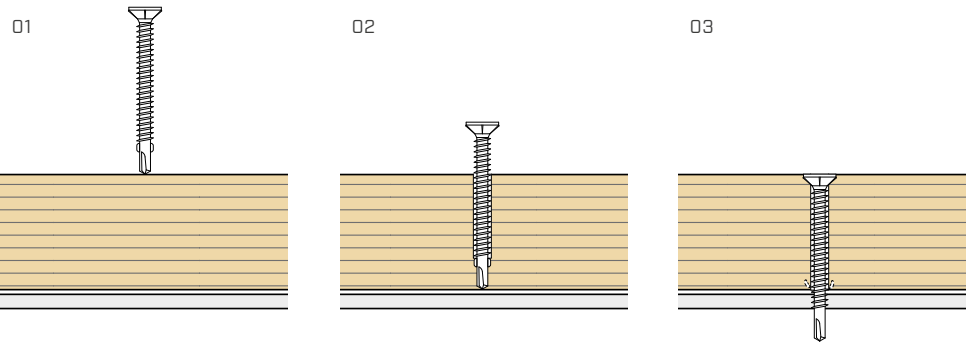
s<sub>S</sub> thickness that can be drilled, steel plate S235/St37  
s<sub>A</sub> thickness that can be drilled, aluminium plate

GEOMETRY

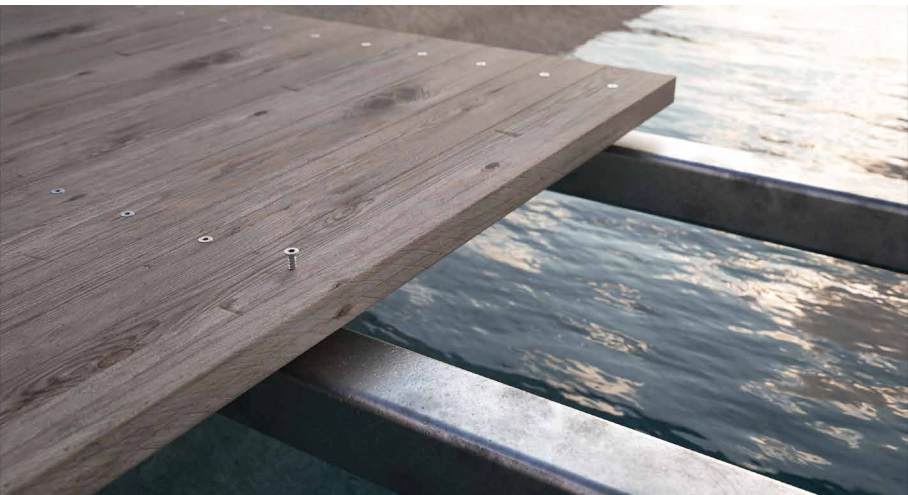


Nominal diameter	d <sub>1</sub>	[mm]	4,8	5,5	6,3
Head diameter	d <sub>K</sub>	[mm]	9,25	10,50	10,50
Thread diameter	d <sub>2</sub>	[mm]	3,50	4,15	4,80
Head thickness	t <sub>1</sub>	[mm]	4,25	4,85	4,50
Tip length	L <sub>p</sub>	[mm]	10,3	10,0	12,0

INSTALLATION



**RECOMMENDATIONS FOR SCREWING:**  
steel: v<sub>S</sub> ≈ 1000 - 1500 rpm  
aluminium: v<sub>A</sub> ≈ 600-1000 rpm



OUTDOOR ENVIRONMENT

Austenitic A2 stainless steel offers higher corrosion resistance.  
Suitable for outdoor applications up to 1 km from the sea and on class T4 acid wood.